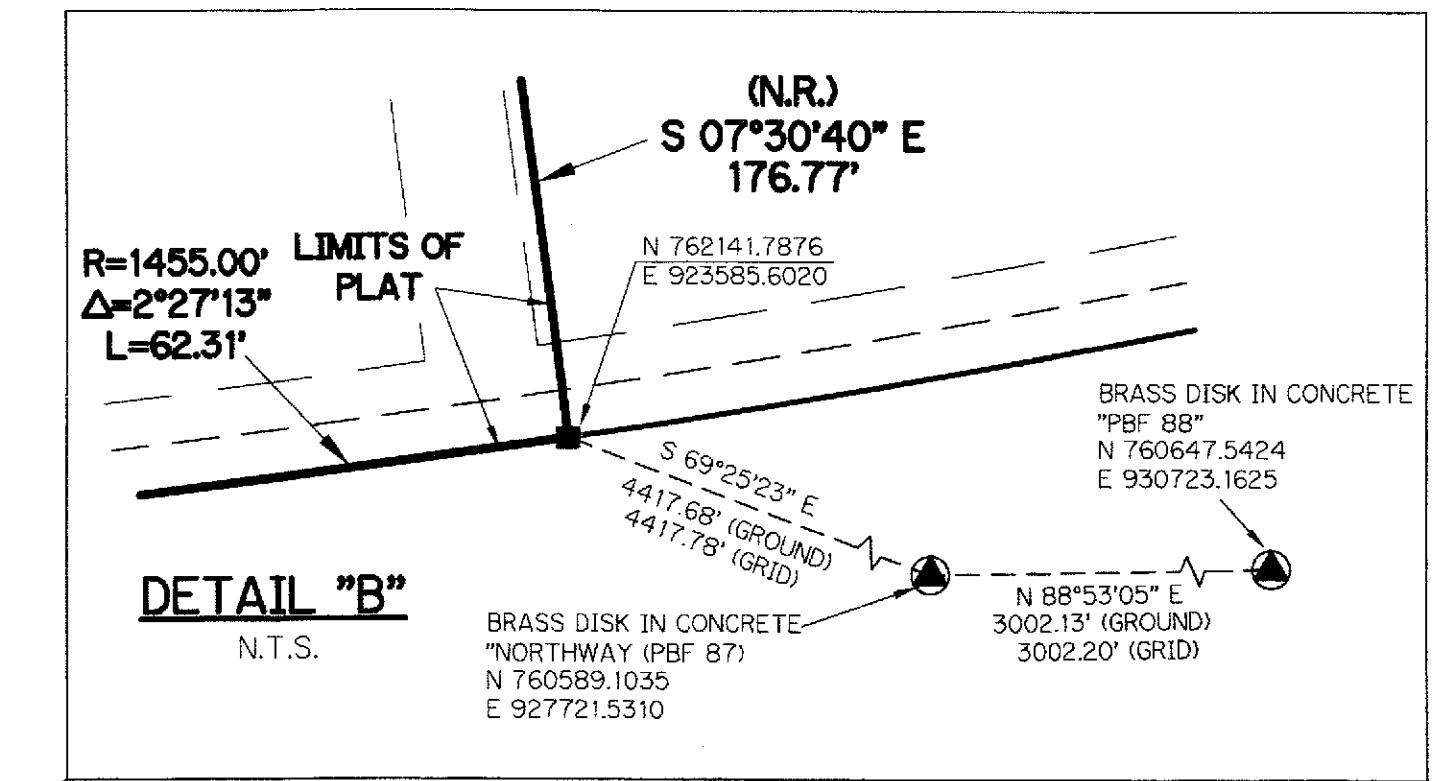
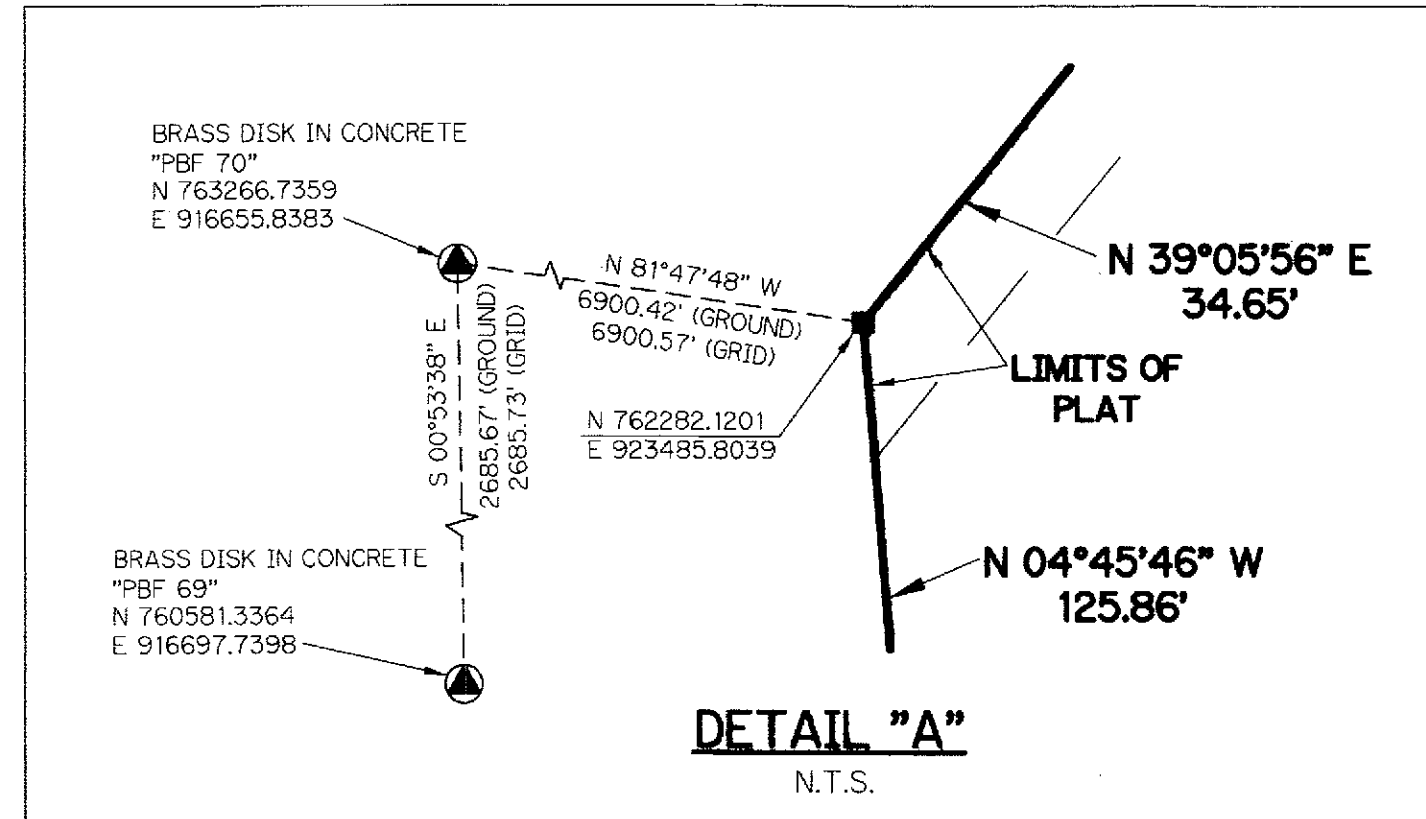
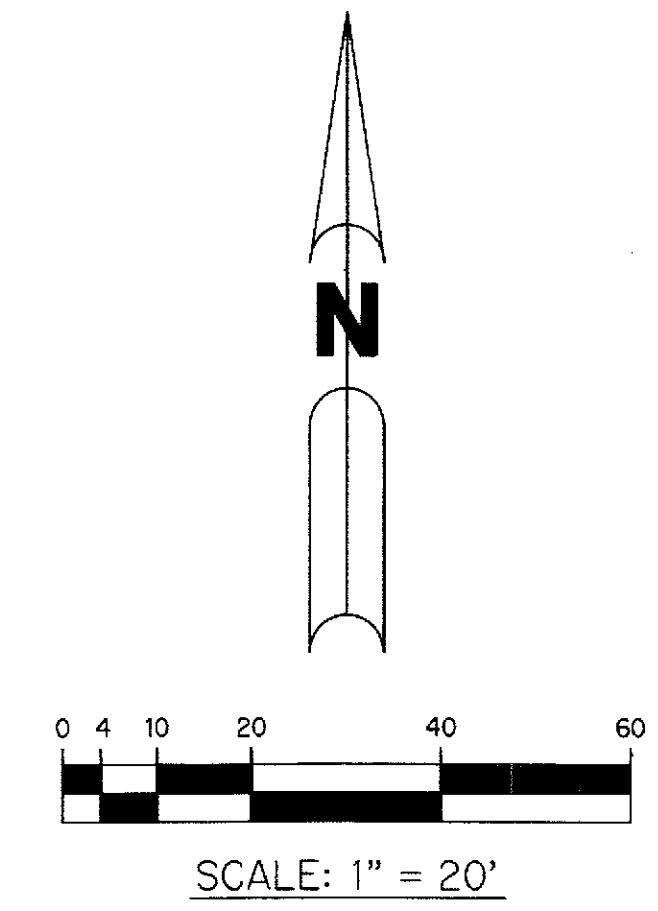


BRIDGES - REPLAT NO. 1

BEING A REPLAT OF LOT 241 AND A PORTION OF TRACT "OS1", BRIDGES - PLAT THREE, AS RECORDED IN PLAT BOOK 115, PAGES 8 THROUGH 16, PUBLIC RECORDS OF PALM BEACH COUNTY, FLORIDA, LYING WITHIN SECTION 29, TOWNSHIP 46 SOUTH, RANGE 42 EAST

SHEET 2 OF 2

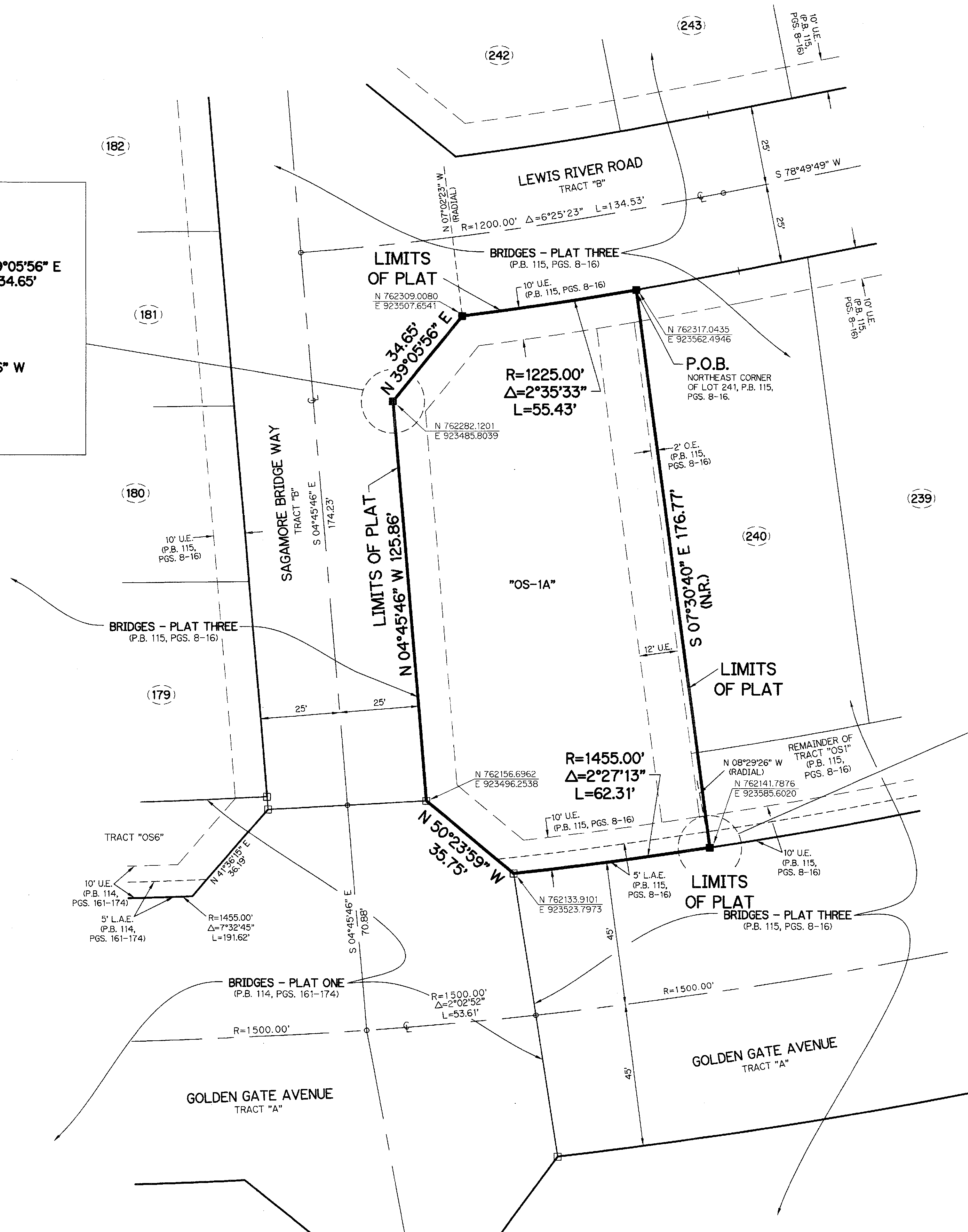
37



LEGEND:

- - SET PERMANENT REFERENCE MONUMENT 4"x4" CONCRETE MONUMENT WITH 1.5" DISK STAMPED L.B. #7741
- - FOUND PERMANENT REFERENCE MONUMENT 4"x4" CONCRETE MONUMENT WITH 1.5" DISK STAMPED L.B. #7741
- - SET PERMANENT CONTROL POINT NAIL WITH 1.25" DISK STAMPED L.B. #7741
- - FUTURE PERMANENT CONTROL POINT PER BRIDGES - PLAT THREE, NO POINT FOUND
- Δ - DELTA ANGLE
- B.E. - BUFFER EASEMENT
- CB - CHORD BEARING
- CH - CHORD DISTANCE
- C.L. - CENTERLINE
- D.B. - DEED BOOK
- D.E. - DRAINAGE EASEMENT
- F.P.L. - FLORIDA POWER & LIGHT
- G.E. - GRADING EASEMENT
- L - ARC LENGTH
- L.A.E. - LIMITED ACCESS EASEMENT
- L.M.A.E. - LAKE MAINTENANCE ACCESS EASEMENT
- L.M.E. - LAKE MAINTENANCE EASEMENT
- L.W.D.D. - LAKE WORTH DRAINAGE DISTRICT
- N.R. - NOT RADIAL
- N.T.S. - NOT TO SCALE
- O.R.B. - OFFICIAL RECORD BOOK
- O.E. - MAINTENANCE & ROOF OVERHANG EASEMENT
- P.B.C.U.E. - PALM BEACH COUNTY UTILITY EASEMENT
- P.B. - PLAT BOOK
- P.C.P. - PERMANENT CONTROL POINT
- PGS. - PAGES
- P.O.B. - POINT OF BEGINNING
- P.O.C. - POINT OF COMMENCEMENT
- P.S.M. - PROFESSIONAL SURVEYOR AND MAPPER
- R - RADIUS
- R/W - RIGHT-OF-WAY
- R.D. & D. - ROAD, DYKE AND DITCH RESERVATION
- S.T. - SURVEY TIE
- U.E. - UTILITY EASEMENT

N 1000000.0000 - DENOTES STATE PLANE COORDINATES
 E 1000000.0000



NOTE:
 COORDINATES SHOWN ON THE GEODETIC CONTROL MEET OR EXCEED THE LOCAL ACCURACY REQUIREMENTS OF A 2-CENTIMETER GEODETIC CONTROL SURVEY. COORDINATES SHOWN ARE GRID COORDINATES DATUM = NAD 83 (1990 ADJUSTMENT) AS READJUSTED BY PALM BEACH COUNTY IN 1998. ZONE = FLORIDA EAST ZONE. LINEAR UNIT = U.S. SURVEY FEET. COORDINATE SYSTEM = 1983 STATE PLANE TRANSVERSE MERCATOR PROJECTION. ALL DISTANCES ARE GROUND. SCALE FACTOR = 1.00002237. PLAT BEARING = GRID BEARING.

THIS INSTRUMENT PREPARED BY
 PERRY C. WHITE, P.S.M. 4213, STATE OF FLORIDA
 SAND & HILLS SURVEYING, INC.
 8461 LAKE WORTH ROAD, SUITE 410
 LAKE WORTH, FLORIDA 33467
 LB-7741